

Probabilistic computer-aided diagnosis of Alzheimer's disease and frontotemporal dementia based on MRI and biochemical markers

Agnès Pérez-Millan^{a,b}, Bertrand Thirion^c, Sergi Borrego-Écija^a, José Contador^a, Jordi Juncà-Parell^a, Beatriz Bosch^a, Neus Falgàs^a, Anna Antonell^a, Raquel Ruiz-Garcia^d, Laura Naranjo^d, Mircea Balasa^a, Albert Lladó^a, Roser Sala-Llloch^b, Raquel Sánchez-Valle^a

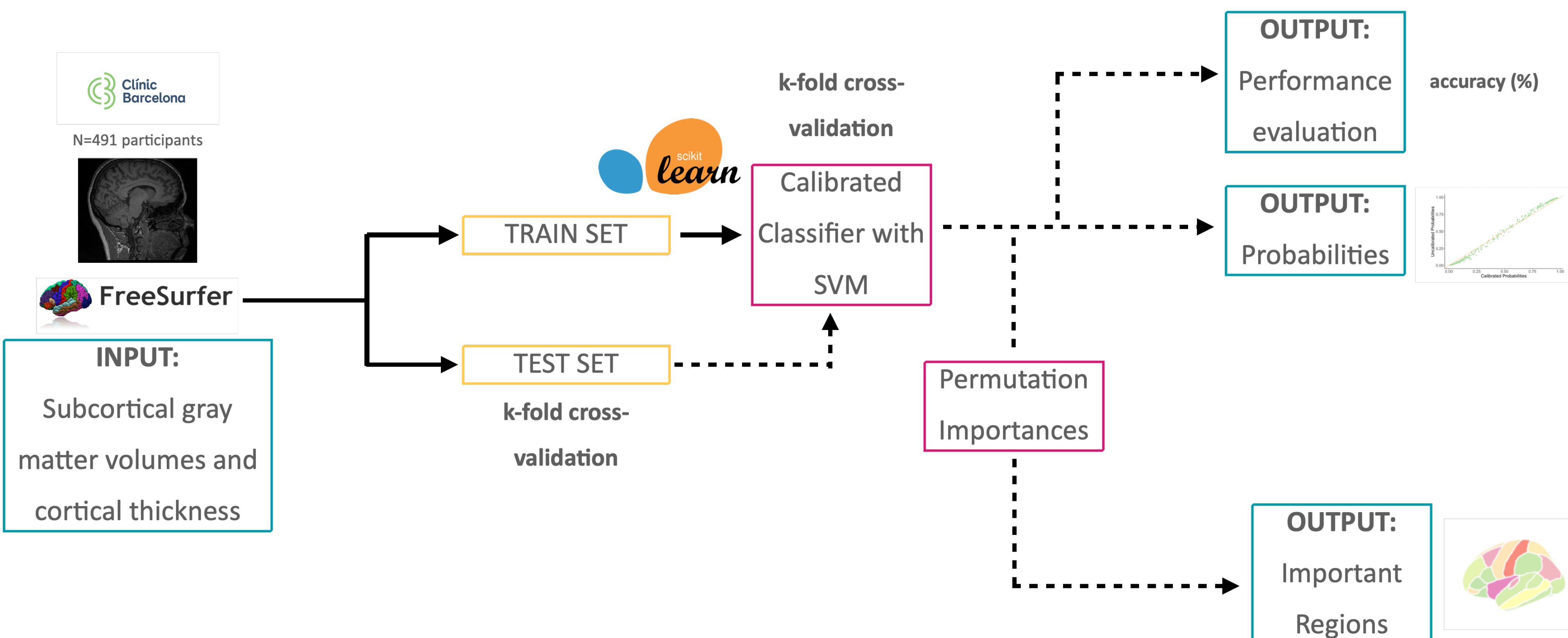


^aAlzheimer's disease and other cognitive disorders unit, Neurology Service, Hospital Clínic de Barcelona, FRCB-IDIBAPS, Barcelona, Spain ^bInstitute of Neuroscience, Department of Biomedicine, University of Barcelona, Barcelona, Spain ^cInria, CEA, Université Paris-Saclay, Paris, France ^dImmunology Department, Biomedical Diagnostic Center, Hospital Clínic, Barcelona, Spain

BACKGROUND

Neuroimaging and fluid biomarkers are used in clinics to differentiate frontotemporal dementia (FTD) from Alzheimer's disease (AD) and other neurodegenerative and non-neurodegenerative disorders. We implemented a machine learning (ML) algorithm that provides individual probabilistic scores for FTD and AD based on magnetic resonance imaging (MRI).

METHODS



We used the 3T MRI images of 215 AD patients (65 ± 10 years, 137 women), 103 FTD patients (64 ± 8 years, 49 women), and 173 CTR (59 ± 15 years, 106 women). We used the individual probabilities to address the clinical problem of confidence in the diagnosis. We investigated whether combining MRI and cerebrospinal fluid (CSF) levels of NfL and 14-3-3 could improve the diagnosis confidence.

CONCLUSIONS

Our ML approach provides individual probabilities and holds promise toward individual diagnoses, especially in doubtful cases as support to clinical findings or in settings with limited access to expert diagnoses.

Contact Information: Agnès Pérez-Millan

agperez@recerca.clinic.cat @agnesperezmi

RESULTS

1. We obtained accuracies of 88% in the AD vs. CTR, 87% for FTD vs. CTR, 82% for AD vs. FTD, and 80% when differentiating the three groups. A total of 74% of FTD and 73% of AD participants have a high (≥0.8) probability of accurate diagnosis in the FTD vs. AD comparison [Figures 1 & 2].

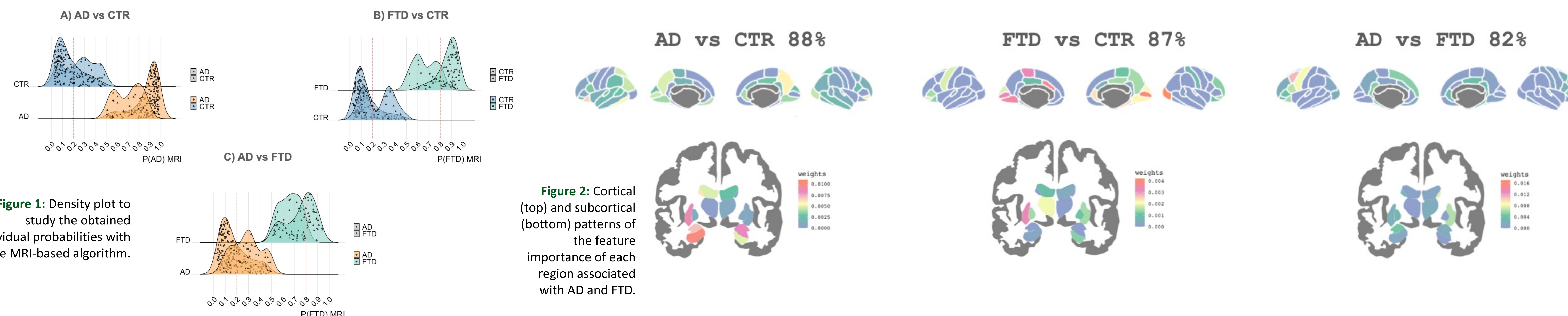


Figure 1: Density plot to study the obtained individual probabilities with the MRI-based algorithm.

Figure 2: Cortical (top) and subcortical (bottom) patterns of the feature importance of each region associated with AD and FTD.

2. Adding CSF-NfL and 14-3-3 levels did not improve the accuracy or the number of patients in the high diagnosis confidence group [Table 1 & Figure 3].

	AD vs CTR	FTD vs CTR	AD vs FTD
MRI all data (N=491)	Accuracy: 87.7% AD: 73.4% CTR: 64.5%	Accuracy: 86.9% FTD: 74.2% CTR: 73.3%	Accuracy: 81.8% AD: 73.3% FTD: 74.2%
MRI reduced data (N=178)	Accuracy: 88.5% AD: 67.2% CTR: 55.3%	Accuracy: 85.6% FTD: 68.1% CTR: 54.3%	Accuracy: 84.6% AD: 53.2% FTD: 54.4%
CSF data (N=178)	Accuracy: 93.0% AD: 72.1% CTR: 71.7%	Accuracy: 86.6% FTD: 72.1% CTR: 23.5%	Accuracy: 83.8% AD: 40.6% FTD: 45.9%
MRI and CSF data (N=178)	Accuracy: 90.3% AD: 68.1% CTR: 64.4%	Accuracy: 86.5% FTD: 70.8% CTR: 53.2%	Accuracy: 88.5% AD: 60.7% FTD: 55.1%

Table 1: Classification performance of the different approaches and the percentage of participants with a higher probability of 0.8 in the diagnosis grouped by diagnosis.

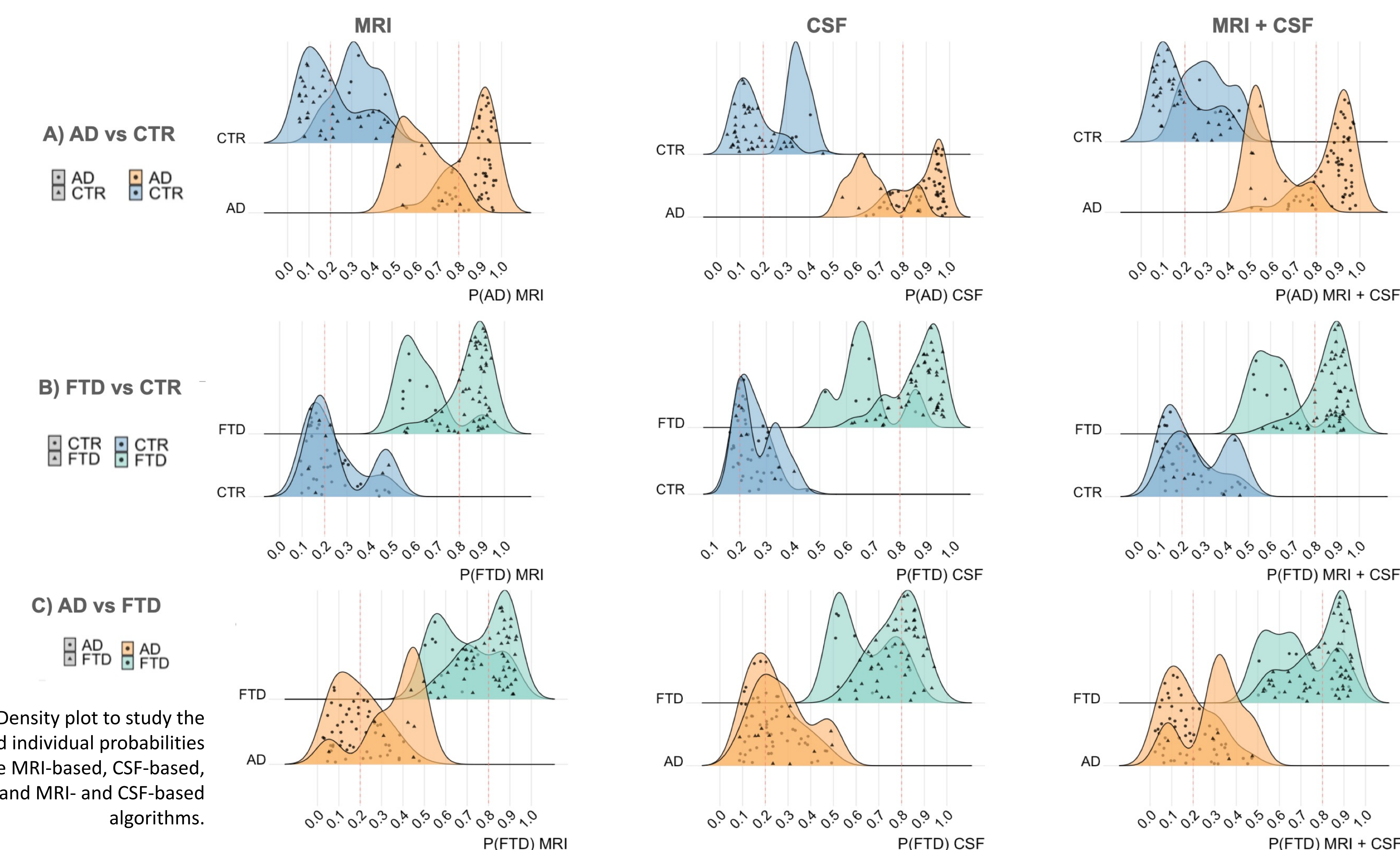


Figure 3: Density plot to study the obtained individual probabilities with the MRI-based, CSF-based, and MRI- and CSF-based algorithms.